



LA *al fresco*

2025 L.A. AL FRESCO DISABLED ACCESS TOOLKIT



TABLE OF CONTENTS

Introduction.....	1
ADA Requirements.....	2
Accessible Routes.....	3
Width Clearances.....	3
Doors and Gates.....	8
Uplifts.....	13
Vertical Clearances.....	14
Ramps.....	15
Deck Requirements.....	25
Dining Areas.....	27
5% Minimum Seating and Standing Spaces.....	28
Knee Clearance.....	29
Toe Clearance.....	29
Clear Space.....	30
Dining Surface Height.....	31
Dining Surfaces Exceeding 34-inches in Height.....	32
Protruding Objects.....	33
Access To Dining Amenities/Services.....	34



INTRODUCTION



The purpose of this Toolkit is to guide businesses in meeting their obligations to provide equal access to customers with disabilities. This access shall be in accordance with disabled access laws, regulations, and standards.

All Al Fresco installations, including those located on the sidewalk, in the street, and on private property shall meet minimum accessibility requirements. The information provided within this Toolkit is a summary of the most common accessibility requirements for on-street and sidewalk dining in the public right-of-way. This Toolkit does not include all applicable requirements. Please refer to applicable codes and reference materials as needed.

For general information call 311,
visit buildla.lacity.org/alfresco
or scan the QR code.





ADA REQUIREMENTS

Accessible Routes

The Americans with Disabilities Act (ADA) regulations define an [accessible route](#) as “a continuous unobstructed path connecting all accessible elements and spaces of a building or facility.”





ADA REQUIREMENTS

Accessible Routes

Accessible routes shall be provided to and through dining areas

Width Clearances - Sidewalk Pedestrian Access Route (PAR)

A 5-foot clear space between encroachments (tables and chairs) and obstructions, such as power poles, street lights, parking meters and trees shall be maintained as the PAR (see Diagram 1). Restaurants are responsible for making sure the PAR is always maintained and free and clear at all times, including customers do not form lines or wait in the PAR.

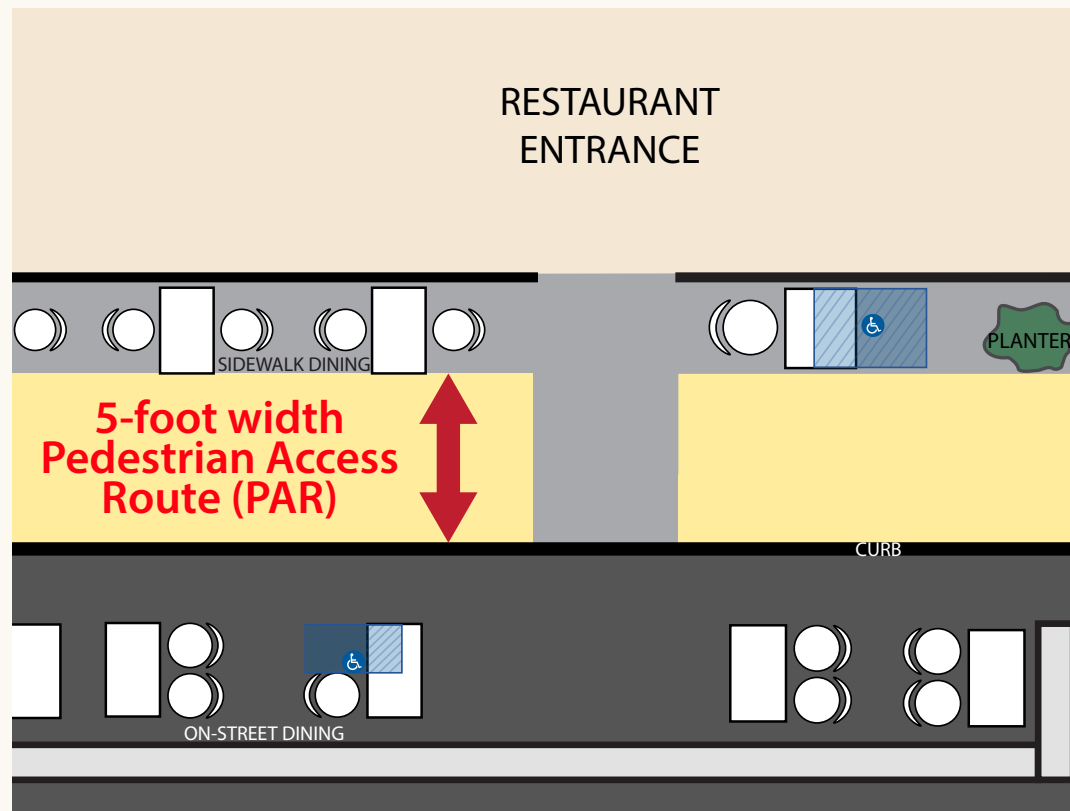
The PAR may be reduced to 4-feet by installing a fixed railing when approved by the Bureau of Engineering (BOE). Fixed railings or barriers (30-inch minimum/42-inch maximum in height) shall be required if the clear space between the sidewalk dining area to the curb or other fixed amenities is less than 5-feet. If the clear space is 5-feet or more, rails or barriers are not required. Non-fixed rails may also be allowed when the clearance is 5-feet or more, subject to BOE approval.

Installation of fixed railings or barriers would require applicants transitioning from the Temporary Use Authority Program to apply for a modified Revocable (R)-Permit and A-Permit. New applicants would apply for an R-Permit and A-Permit.

Accessible Routes

Accessible routes shall be provided to and through dining areas

Diagram 1. Width Clearances - Sidewalk Pedestrian Access Routes (PAR)





ADA REQUIREMENTS

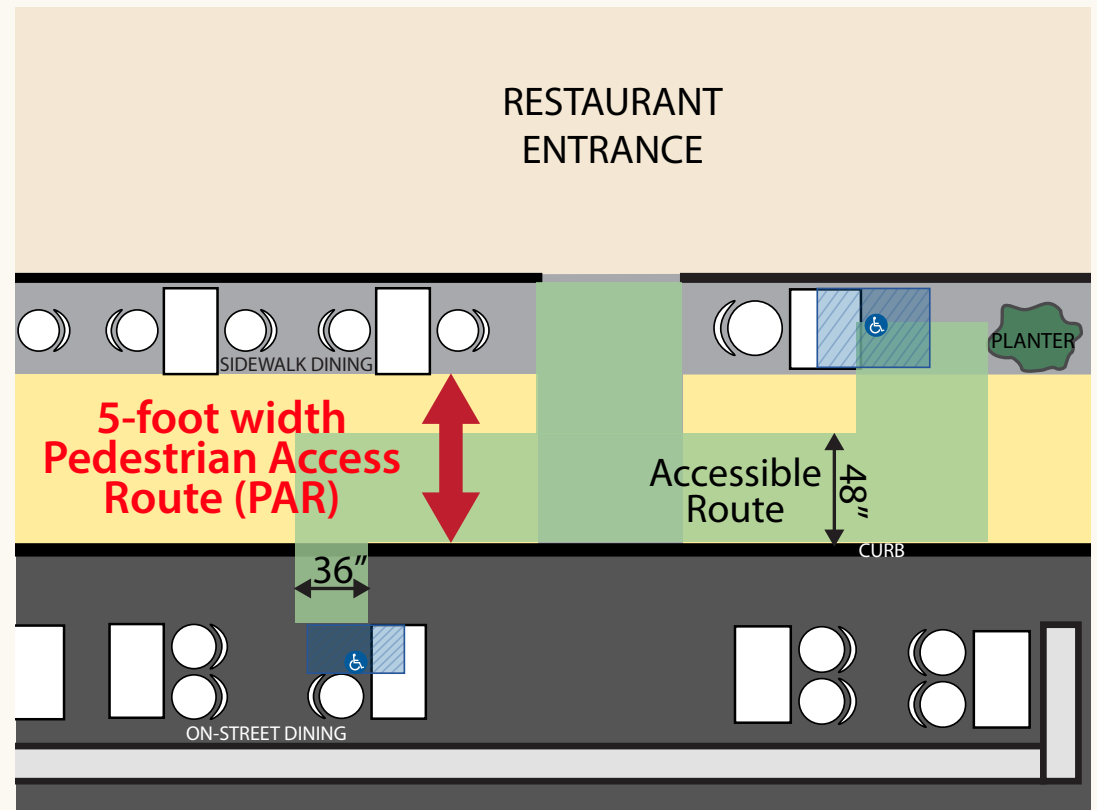
Accessible Routes

Accessible routes shall be provided to and through dining areas

Width Clearances - Routes to and from Accessible Tables

The accessible route width requirements are 48" on the public sidewalk and 36" on street.

Diagram 2. Accessible Routes | [CBC 11B-403.5.1 Clear Width](#)



Accessible Routes

Accessible routes shall be provided to and through dining areas

Aisle or Aisle Accessway

Aisle accessways are paths for means of egress between rows of seats or between tables. The aisle accessway leads to aisles (36" min width), which in turn lead toward exits from the space.

Where seating is located at a table or counter and is adjacent to an aisle or aisle accessway, the measurement of required clear width of the aisle or aisle accessway shall be made to a line 19 inches away from and parallel to the edge of the table or counter. The 19-

inch distance shall be measured perpendicular to the side of the table or counter. In the case of other side boundaries for aisles or aisle

accessways, the clear width shall be measured to walls, edges of seating and tread edges.

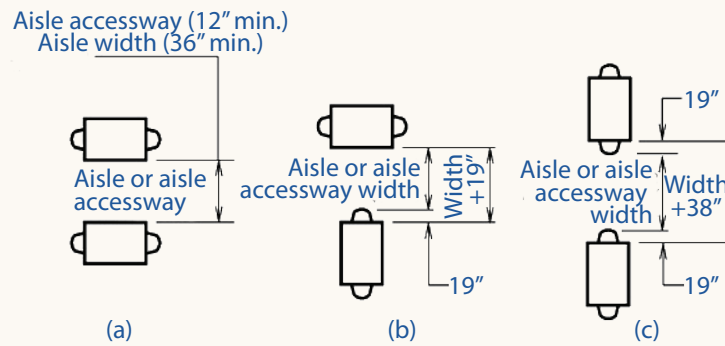
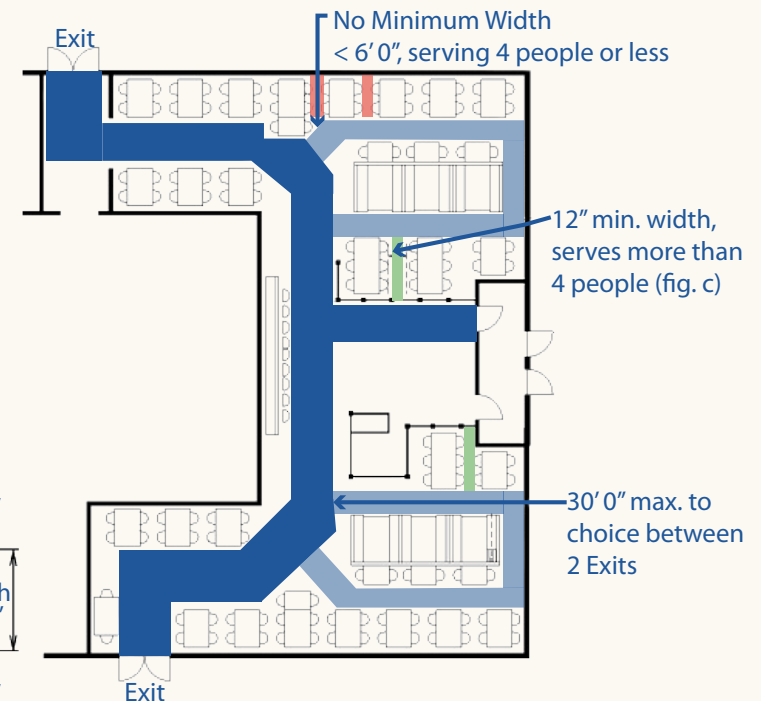


Diagram 3. Aisle or Aisle Accessway



- 36" min. aisle width.
- 18" min. aisle accessway width.
Assume all aisle accessways 24'-0" in length
therefore, $12" + 0.5" (24 - 12) = 18$ width (unless otherwise noted)
- Aisle accessway with no minimum width.
- Aisle accessway with 12" minimum width.

Accessible Routes

Accessible routes shall be provided to and through dining areas

Width Clearances - Clear Width at a Turn

Where the accessible route makes a 180 degree turn around an element (such as a table) which is less than 48-inches wide, clear width shall be 42-inches minimum approaching the turn, 48-inches minimum at the turn, and 42-inches minimum leaving the turn.

Where the clear width at the turn is 60-inches minimum, clear width shall be 36-inches minimum approaching the turn and 36-inches minimum leaving the turn. [CBC 11B-403.5.2 Clear Width at Turn](#)

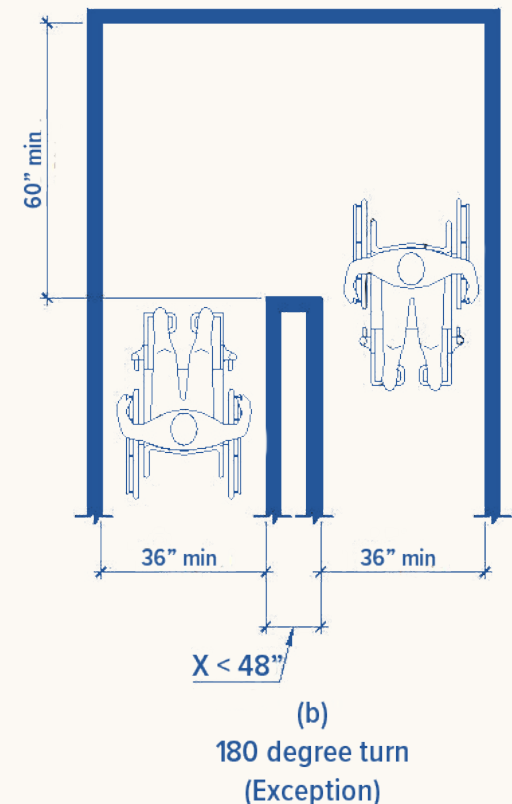
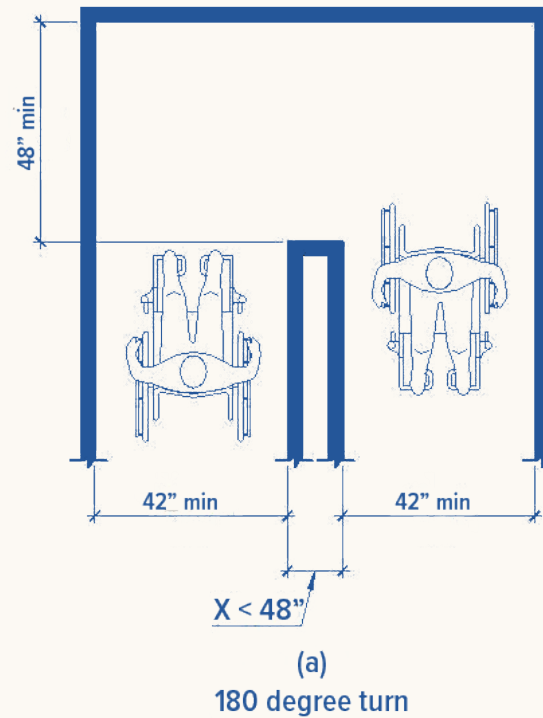


Diagram 4. Clear Width at Turn



ADA REQUIREMENTS

Accessible Routes

Accessible routes shall be provided to and through dining areas

Doors and Gates

- Entrance doors and gates (including the restaurant entrance door) to and from the outdoor dining area(s) are part of an accessible route.
- Manual doors and gates intended for user passage shall comply with [California Building Code \(CBC\) Section 11B-404.2](#), including:
 - A clear width of 32-inches minimum for doors and gate openings.
 - Clear openings with swinging doors and gates measured between the face of the door or gate and the stop, with the door or gate open 90 degrees.
 - A clear opening of 36-inches minimum when the length of the opening is more than 24-inches deep.
 - No projections are allowed into the required clear opening width lower than 34-inches above the finish floor or ground. Projections into the clear opening width between 34-inches and 80-inches above the finish floor or ground such as handles, latches, pulls, and other parts of the door or gate shall not exceed 4-inches.



ADA REQUIREMENTS

Accessible Routes

Accessible routes shall be provided to and through dining areas

Doors and Gates - continued

- Swinging doors and gates shall have maneuvering clearances complying with the table below.

TYPE OF USE		MINIMUM MANEUVERING CLEARANCE	
Approach Direction	Door or Gate Side	Perpendicular to Doorway	Parallel to Doorway (beyond latch side unless noted)
From Front	Pull	60-inches (1524 mm)	18-inches (457 mm) ⁵
From Front	Push	48-inches (1219 mm)	0-inches (0 mm) ¹
From Hinge Side	Pull	60-inches (1524 mm)	36-inches (914 mm)
From Hinge Side	Push	44-inches (1118 mm) ²	22-inches (559 mm) ³
From Latch Side	Pull	60-inches (1524 mm)	24-inches (610 mm)
From Latch Side	Push	44-inches (1118 mm) ⁴	24-inches (610 mm)

Footnotes

- Add 12-inches (305 mm) if closer and latch are provided.
- Add 4-inches (102 mm) if closer and latch are provided.
- Beyond hinge side.
- Add 4-inches (102 mm) if closer is provided.
- Add 6-inches (152 mm) at exterior side of exterior doors.

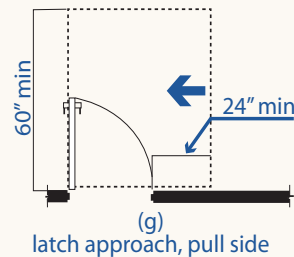
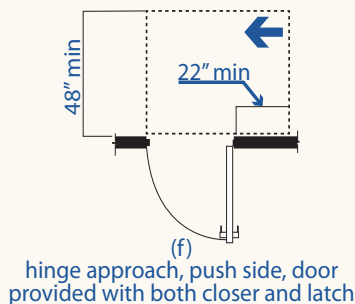
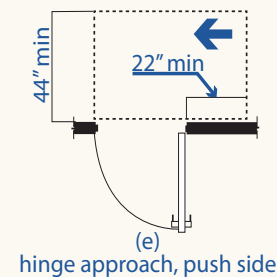
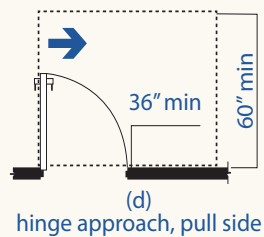
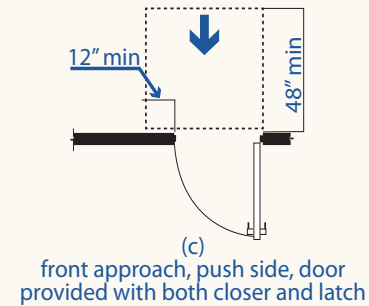
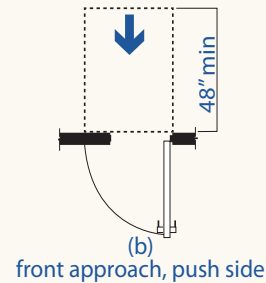
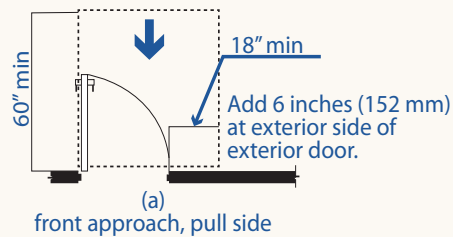
[CBC 11B-404.2.4.1 Swinging Doors and Gates](#)

Accessible Routes

Accessible routes shall be provided to and through dining areas

Doors and Gates - *continued*

Diagram 5. Doors and Gates



Note:
Arrow denotes direction of travel.



ADA REQUIREMENTS

Accessible Routes

Accessible routes shall be provided to and through dining areas

Doors and Gates - continued

- Handles, pulls and latches, locks and other operable parts on the door or gate shall comply with:
 - Operable parts of such hardware shall be 34-inches minimum and 44-inches maximum above the finish floor or ground.
- Door and gate closing speed shall comply with: ([CBC Section 11B-404.2.8](#))
 - Door and gate closers shall be adjusted so that from an open position of 90 degrees, the time required to move the door or gate to a position of 12 degrees from the latch is 5 seconds minimum.
 - Door and gate spring hinges shall be adjusted so that from the open position of 70 degrees, the door or gate shall move to the closed position in 1.5 seconds minimum.
- The force for pushing or pulling open a door or gate shall be as follows:
 - 5 pounds maximum (forces do not apply to the force required to retract latch bolts or disengage other devices that hold the door or gate in a closed position).



ADA REQUIREMENTS

Accessible Routes

Accessible routes shall be provided to and through dining areas

Doors and Gates - continued

- Swinging door or gate surfaces within 10-inches of the finished floor or ground measured vertically shall have a smooth surface on the push side extending the full width of the door or gate. Parts creating horizontal or vertical joints in these surfaces shall be within 1/16-inch of the same plane as the other, and be free of sharp or abrasive edges. Cavities created by added kick plates shall be capped.

Exception: Doors and gates that do not extend to within 10-inches of the finish floor or ground shall not be required to comply.



ADA REQUIREMENTS

Accessible Routes

Accessible routes shall be provided to and through dining areas

Uplifts

NO CORD COVERS ACROSS CIRCULATION PATHS

Electrical wiring and/or cords are only allowed within the public right-of-way when specifically requested and approved as a part of the R-Permit. But, even when electrical outlets are allowed, surface cords with or without cord covers are NOT allowed to cross circulation paths.



ADA REQUIREMENTS

Accessible Routes

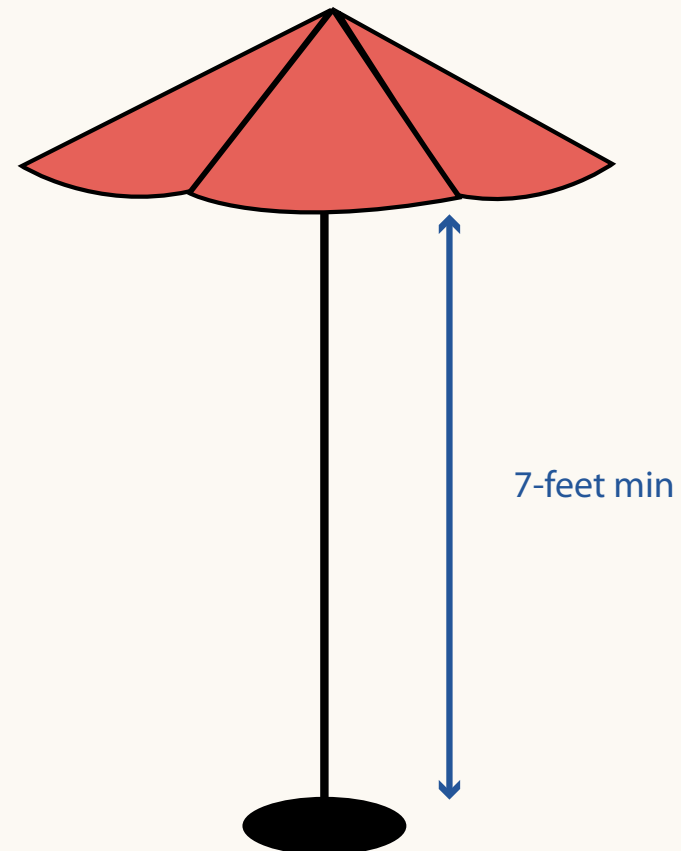
Accessible routes shall be provided to and through dining areas

Vertical Clearances

The entire dining area and all circulation routes to and through this area shall have a minimum vertical clearance of 7-feet. This also includes umbrellas which must have a minimum of 7-feet of vertical clearance between the floor of the dining area and the shade canopy.

Clearances shall be measured from the widest point of the element (at the base if it's the widest, not the pole which is narrower than the base), or the lowest possible point of the element (i.e., umbrella with a canopy tilt, measure to the bottom of the canopy tilt).

Diagram 6. Vertical Clearance



ADA REQUIREMENTS

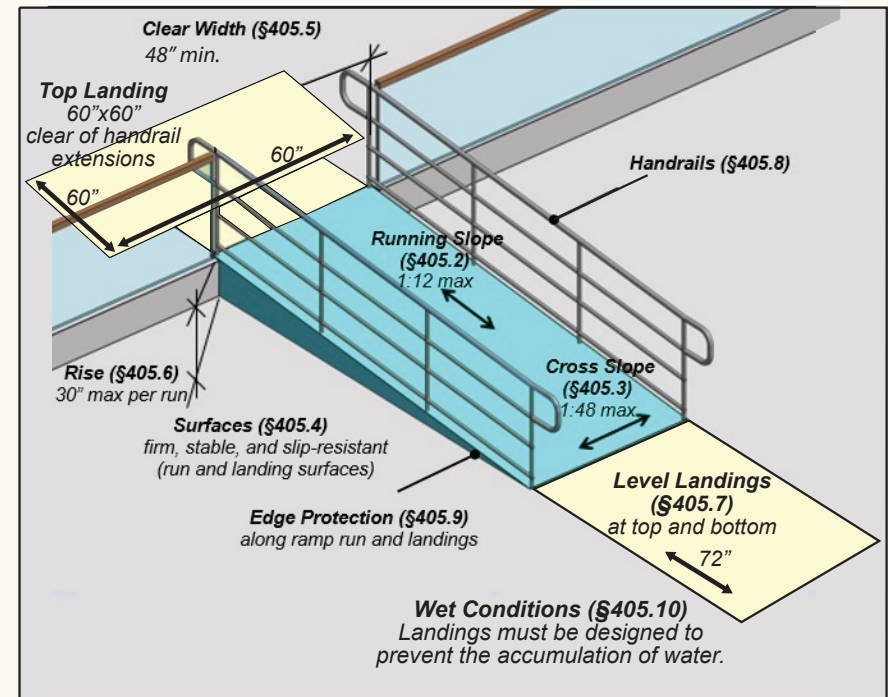
Ramps

As a part of the accessible route to and through dining areas. As approved on a case by case basis, ramps need to follow these requirements. For On-Street Dining, LADOT approval is required in addition to BOE approval.

Slopes

- The maximum running slope of a ramp shall be 1:12.
- Cross slope of a ramp run shall not be steeper than 1:48.
- Changes in level other than the running slope and cross slope are not permitted on ramp runs.
- The clear width of a ramp run shall be 48-inches minimum. Handrails may project into the required clear width of the ramp at each side 3 - 1/2-inches maximum at the handrail height.
- Outdoor ramps and their approaches shall be designed so that water will not accumulate on walking surfaces.

Diagram 7. Ramp Slopes



[CBC 11B-405 Ramps](#)



ADA REQUIREMENTS

Ramps

As a part of the accessible route to and through dining areas. As approved on a case by case basis, ramps need to follow these requirements. For On-Street Dining, LADOT approval is required in addition to BOE approval.

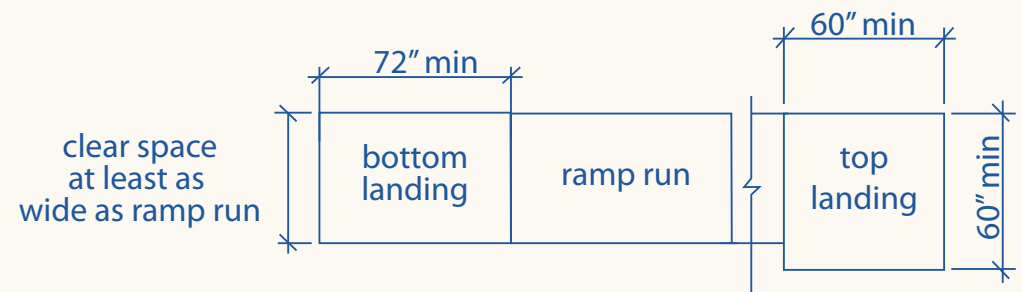
Landings

Ramps shall have level landings at the top and bottom of each ramp. Landings shall have the following features:

- Changes in level, slopes exceeding 1:48, and detectable warnings shall not be permitted.
- The landing clear width shall be at least as wide as the widest ramp run leading to the landing.
- Top landings shall be 60-inches wide minimum.
- Bottom landings shall extend 72-inches minimum in the direction of the ramp run.

[CBC 11B-405.7 Landings](#)

Diagram 8. Ramp Landings





ADA REQUIREMENTS

Ramps

As a part of the accessible route to and through dining areas. As approved on a case by case basis, ramps need to follow these requirements. For On-Street Dining, LADOT approval is required in addition to BOE approval.

Handrails

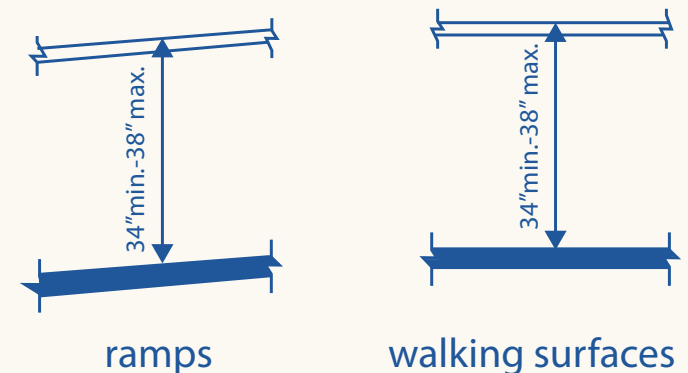
Handrails shall be provided on both sides of ramps.

Handrails shall have the following features:

- The top of handrail gripping surfaces shall be mounted 34-inches minimum and 38-inches maximum above ramp and landing surfaces. Handrails shall be at a consistent height above walking surfaces and ramp surfaces. (see Diagram 9).

CBC 11B-505 Handrails

Diagram 9.
Height Above Walking Surfaces and Ramp Surfaces



Ramps

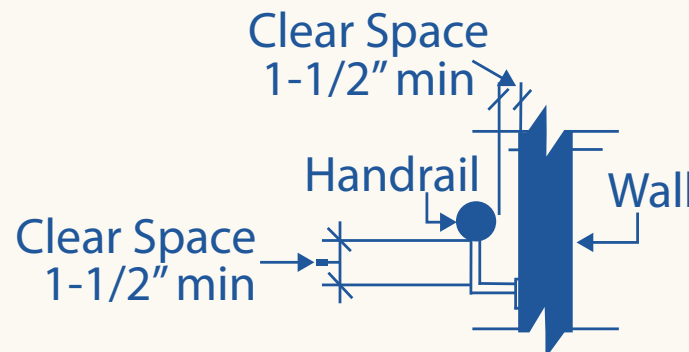
As a part of the accessible route to and through dining areas. As approved on a case by case basis, ramps need to follow these requirements. For On-Street Dining, LADOT approval is required in addition to BOE approval.

Handrails - *continued*

- The clear space between the handrail and the wall shall be 1½-inches minimum. (see Diagram 10).
- Gripping surfaces shall be continuous and shall not be obstructed along their tops or sides. The bottoms of handrail gripping surfaces shall not be obstructed for more than 20 percent of their length. Where provided, horizontal projections shall occur 1½-inches minimum below the bottom of the handrail gripping surface. (see Diagram 10).

[CBC 11B-505 Handrails](#)

Diagram 10. Handrail Clear Space and Gripping Surface



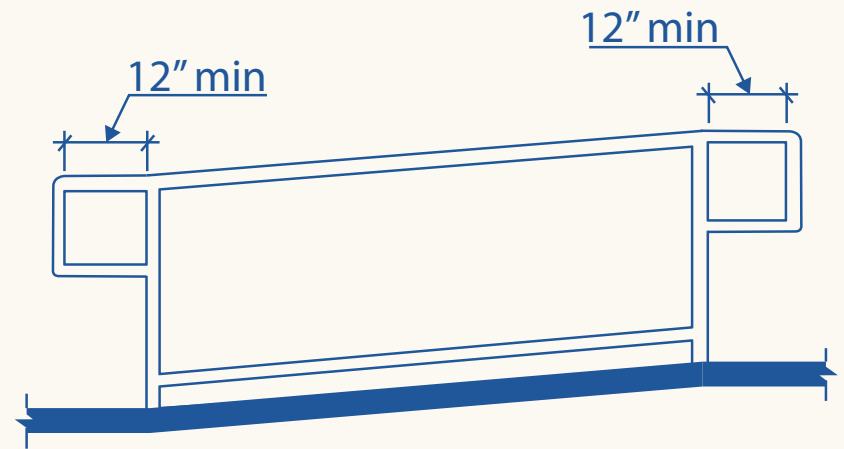
Ramps

As a part of the accessible route to and through dining areas. As approved on a case by case basis, ramps need to follow these requirements. For On-Street Dining, LADOT approval is required in addition to BOE approval.

Handrails - *continued*

- Handrail gripping surfaces with a circular cross section shall have an outside diameter of 1¼-inches minimum and 2-inches maximum.
- Handrail gripping surfaces and any surfaces adjacent to them shall be free of sharp or abrasive elements and shall have rounded edges.
- Handrails shall not rotate within their fittings.
- Handrail gripping surfaces shall extend beyond and in the same direction of ramp runs.
- Handrail gripping surfaces shall extend horizontally at least 12-inches beyond the top and bottom of the ramp segment and shall be parallel with the floor or ground surface of the landings. (see Diagram 11).
- Extensions shall return to a wall, guard, or the landing surface, or shall be continuous to the handrail of an adjacent ramp run.

Diagram 11. Top and Bottom Handrail Extension Ramp





ADA REQUIREMENTS

Ramps

As a part of the accessible route to and through dining areas. As approved on a case by case basis, ramps need to follow these requirements. For On-Street Dining, LADOT approval is required in addition to BOE approval.

Handrails - continued

Handrails may project into the required clear width of the ramp at each side 3½-inches maximum at the handrail height.

Where free-standing objects, for example handrail extensions, are mounted on posts and project into a circulation path, the lowest edge of such an obstruction shall be located 27-inches maximum above the finish floor or ground. Exception: The sloping portions of handrails serving ramps shall not be required to comply with:

- Protruding objects shall not reduce the clear width required for accessible routes.
- Handrails shall be permitted to protrude 4½-inches maximum into circulation paths. See Diagram 10. Protruding Objects.
- Support posts shall not encroach into the minimum required dimensions of the ramp's landing areas.

[CBC 11B-307 Protruding Objects](#)

[CBC 11B-405.5 Clear Width](#)



ADA REQUIREMENTS

Ramps

As a part of the accessible route to and through dining areas. As approved on a case by case basis, ramps need to follow these requirements. For On-Street Dining, LADOT approval is required in addition to BOE approval.

Warning Curbs

Abrupt changes in level exceeding 4-inches in a vertical dimension between walks, sidewalks or other pedestrian ways and adjacent surfaces or features shall be identified by warning curbs at least 6-inches in height above the walk or sidewalk surface.

Exceptions:

- A warning curb is not required between a walk or sidewalk and an adjacent street or driveway.
- A warning curb is not required when a guard or handrail is provided with a guide rail centered 2-inches minimum and 4-inches maximum above the surface of the walk or sidewalk.

[CBC 11B-303 Warning Curbs](#)



ADA REQUIREMENTS

Ramps

As a part of the accessible route to and through dining areas. As approved on a case by case basis, ramps need to follow these requirements. For On-Street Dining, LADOT approval is required in addition to BOE approval.

Edge Protection

Edge protection shall be provided on each side of ramp runs and at each side of ramp landings. Exception: Edge protection shall not be required on ramps that are not required to have handrails. Edge protection shall not be required on the sides of ramp landings serving an adjoining ramp run or stairway. Edge protection shall not be required on the sides of ramp landings having a vertical drop off of 1/2 inch maximum within 10 inches horizontally of the minimum landing area specified in Landings referencing Section 11B-405.7. A curb or barrier shall be provided that prevents the passage of a 4-inch diameter sphere, where any portion of the sphere is within 4-inches of the finish floor or ground surface. To prevent wheel entrapment, the curb or barrier shall provide a continuous and uninterrupted barrier along the length of the ramp. (see Diagram 12)

[CBC 11B-405.9 Edge Protection](#)

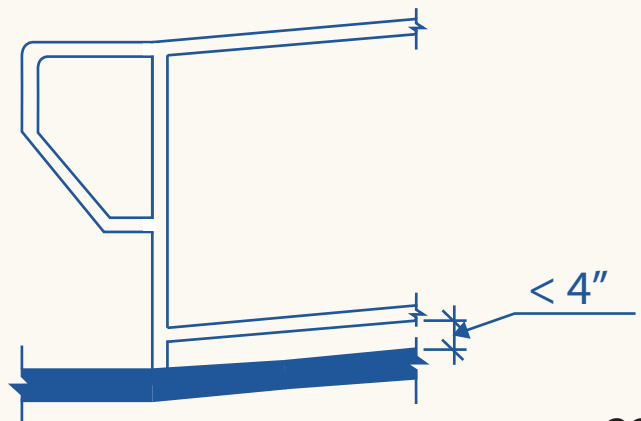


Diagram 12. Barrier Edge Protection



ADA REQUIREMENTS

Stairs

As a part of the accessible route to and through dining areas. As approved on a case by case basis, stairs need to follow these requirements. For On-Street Dining, LADOT approval is required in addition to BOE approval.

All steps on a flight of stairs shall have uniform riser heights and uniform tread depths. Risers shall be 4 inches high minimum and 7 inches high maximum. Treads shall be 11 inches deep minimum. Open risers are not permitted. Stair treads shall be stable, firm, and slip resistant. Slopes exceeding 1:48 and detectable warnings shall not be permitted. Stairs shall have the upper approach and all treads marked by a stripe providing clear visual contrast.

- The stripe shall be a minimum of 2 inches wide to a maximum of 4 inches wide placed parallel to and not more than one inch from the nose of the step or upper approach.
- The stripe shall extend the full width of the step or upper approach and shall be of material that is slip resistant as the other treads of the stair. A painted stripe shall be acceptable. Grooves shall not be used to satisfy this requirement.

CBC 11B-504 Stairways

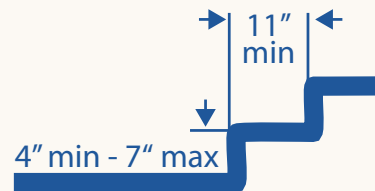


Diagram 13. Stair Edge Protection



ADA REQUIREMENTS

Stairs

As a part of the accessible route to and through dining areas. As approved on a case by case basis, stairs need to follow these requirements. For On-Street Dining, LADOT approval is required in addition to BOE approval.

Edge Protection

Stairs shall have handrails on both sides and be continuous within the full length of each stair flight. Top gripping surfaces of handrails shall be 34 inches minimum and 38 inches maximum vertically above stair nosings and a consistent height.

At the top of a stair flight, handrails shall extend horizontally above the landing for 12 inches minimum beginning directly above the first riser nosing. Extensions shall return to a wall, guard or the landing surface.

At the bottom of a stair flight, handrails shall extend at the slope of the stair flight for a horizontal distance equal to one tread depth beyond the last riser nosing. The horizontal extension of a handrail shall be 12 inches long minimum and a height equal to that of the sloping portion of the handrail as measured above the stair nosing. Extension shall return to a wall, guard or landing surface.

[CBC 11B-504 Stairways](#)

[CBC 11B-505 Handrails](#)

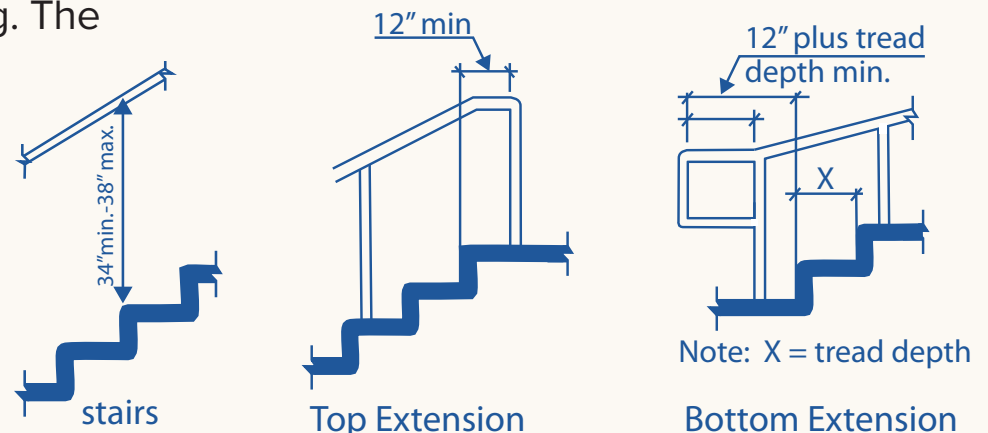


Diagram 14. Stair Edge Protection

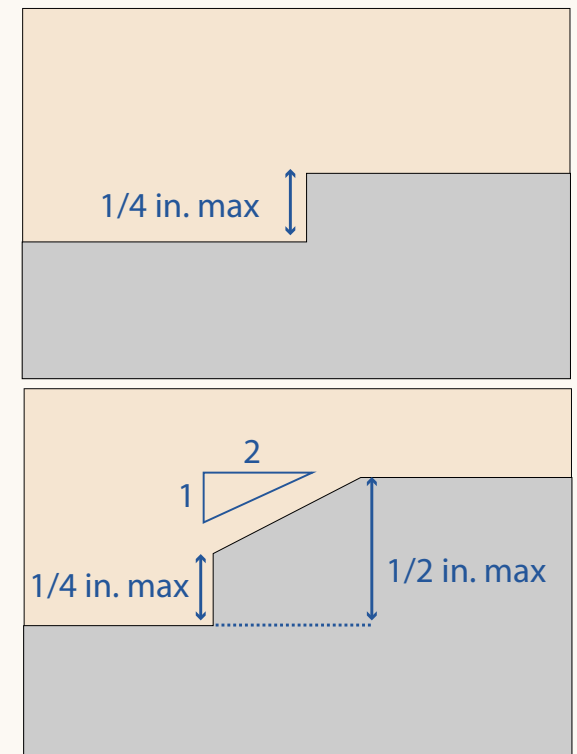
Deck Requirements

Changes in Levels

- The on-street dining area should be flush with the sidewalk.
- Changes in vertical height from the sidewalk are permitted up to a 1/4-inch maximum without an additional edge treatment. Changes in vertical height that are between 1/4-inch and 1/2-inch from the sidewalk shall be beveled with a slope not steeper than 1:2 (see Diagram 15).
- [CBC 11B-303 Changes in Level](#), slopes exceeding 1:48, and detectable warnings **shall NOT be permitted** at:
 - Turning spaces
 - Clear floor or ground spaces
 - Minimum maneuvering clearances at doors and gates
 - Ramp landings

Diagram 15.

Vertical Height Edge Treatment



[CBC 11B-303 Changes in Level](#)

Deck Requirements

Surface

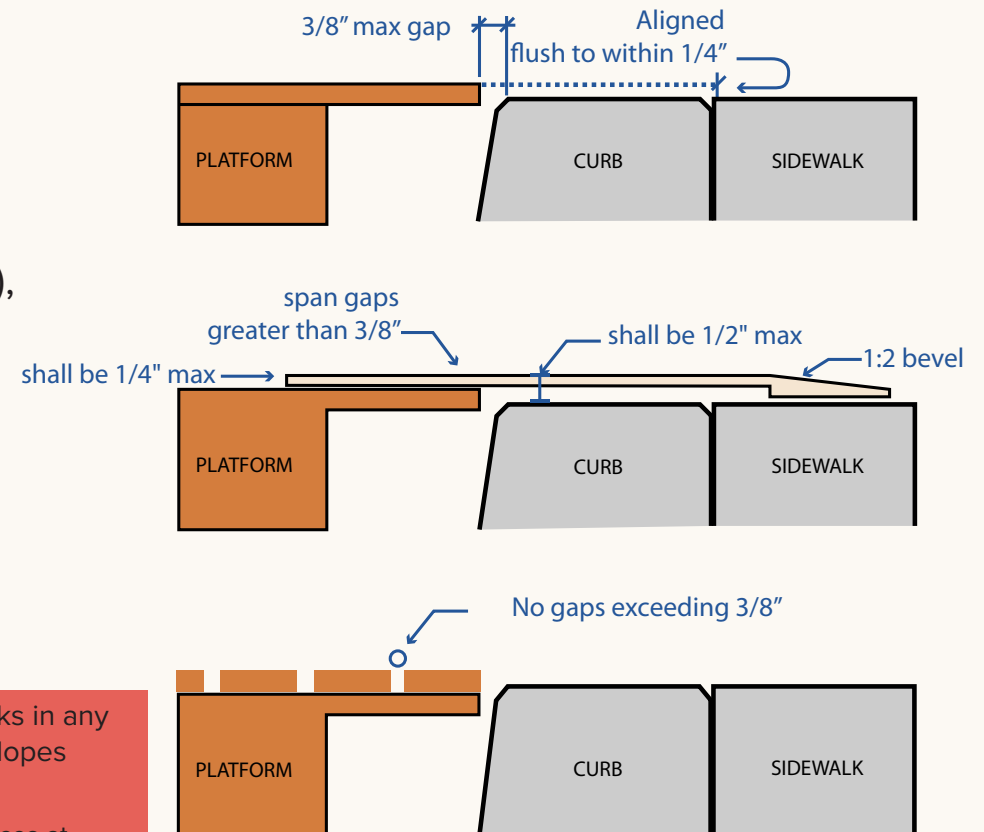
- Elongated openings shall be placed so the long dimension is perpendicular to the dominant direction of travel.
- If there are no dominant directions of travel (i.e., 90 and 180 degree turns on the accessible route), elongated openings are prohibited.
- The deck surface shall be stable, firm and slip resistant.
- Restaurants are responsible for making sure the deck is always clean and maintained.

CBC 11B-302.3 Openings

NOTE: Applicants may achieve ADA compliance by arranging boards/planks in any direction provided no gaps are between boards/planks. Changes in level, slopes exceeding 1:48, and detectable warnings shall NOT be permitted at:

- Turning spaces
- Clear floor or ground spaces
- Minimum maneuvering clearances at doors and gates
- Ramp landings

Diagram 16. Horizontal Gap Edge Treatment





ADA REQUIREMENTS

Dining Areas

Dining areas are defined as dining surfaces provided by the business to consume food or beverages.





ADA REQUIREMENTS

Dining Areas - Seating

Amenities within the dining area shall be accessible

Minimum Seating and Standing Spaces of 5% (rounded up to the nearest whole number)

- Where dining surfaces are provided for the consumption of food or drink, at least 5% (rounded up to the nearest whole number) of the seating spaces and standing spaces at the dining surfaces shall comply with:
 - Accessible knee clearance, toe clearance, clear space, and dining surface requirements.
 - Accessible tables and routes must be dispersed amongst all different types of seating areas and experiences (i.e., Al Fresco Private Property (indoor/outdoor), Sidewalk, and On-Street dining).
 - Examples that may contribute to a different dining experience include lighting, shade, decor, vibe, heating, cooling, and the types of tables/seating provided.
- Companion seating spaces at accessible dining tables shall be comparable to seating spaces provided generally in the dining area.

[CBC 11B-226 Dining Surfaces and Work Surfaces](#)

[CBC 11B-902 Dining Surfaces and Work Surfaces](#)

[CBC 11B-306 Knee and Toe Clearance](#)

Dining Areas - Seating

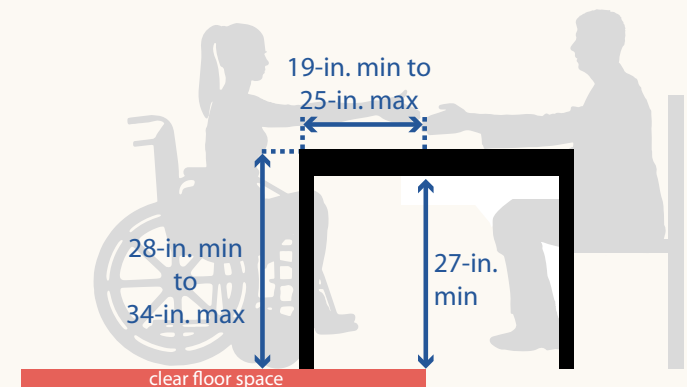
Amenities within the dining area shall be accessible

Knee Clearance

- Space under a dining surface between 9-inches and 27-inches above the finish floor or ground shall be considered knee clearance and shall comply with:
 - Knee clearance shall extend 25-inches maximum under a dining surface at 9-inches above the finish floor or ground.
 - At dining surfaces that are required to be accessible, knee clearance shall extend a minimum of 19-inches deep at 27-inches above the finish floor or ground.
 - Knee clearance shall be a minimum of 30-inches wide.

CBC 11B-306 Knee and Toe Clearance

Diagram 17. Knee Clearance



Note: Pedestal tables generally do not fit these requirements for knee and toe clearance.



ADA REQUIREMENTS

Dining Areas - Seating

Amenities within the dining area shall be accessible

Toe Clearance

- Space under a dining surface between the finished floor/ground to 9-inches above the finished floor, shall be considered toe clearance and shall comply with:
 - 25-inch maximum extension under the accessible dining surface.
 - 19-inch minimum extension under the accessible dining surface.
 - Space extending greater than 6-inches beyond the available knee clearance at 9-inches above the finish floor/ground shall not be considered toe clearance.
 - 30-inch minimum width.

[CBC 11B-306 Knee and Toe Clearance](#)

Dining Areas - Seating

Amenities within the dining area shall be accessible

Clear Space

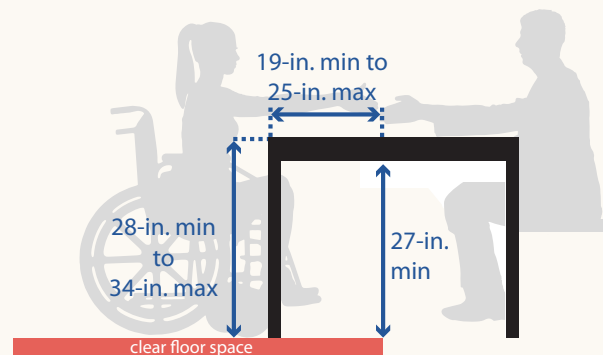
- Surfaces of a clear floor or ground space shall comply with:
 - Changes in level, slopes exceeding 1:48, and detectable warnings **shall not be permitted**.
 - 30-inch minimum by 48-inch minimum of clear floor or ground space.

Dining Surface Height

- Tops of dining surfaces shall be 28-inches minimum and 34-inches maximum above the finish floor or ground.

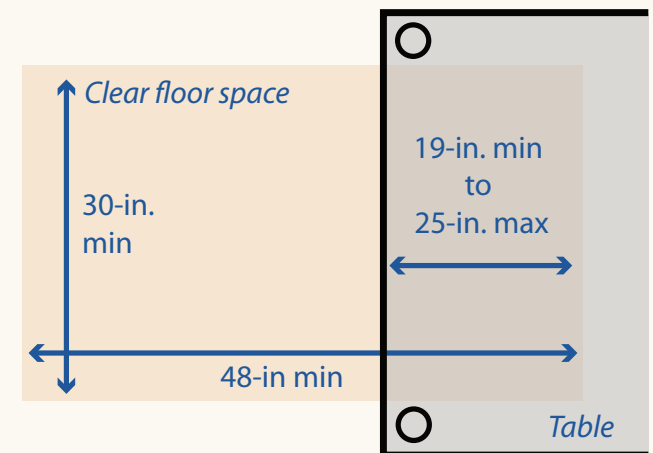
CBC 11B-902 Dining Surfaces and Work Surfaces

Diagram 18. Table Height



Note: Pedestal tables generally do not fit these requirements for knee and toe clearance.

Diagram 19. Clear Space



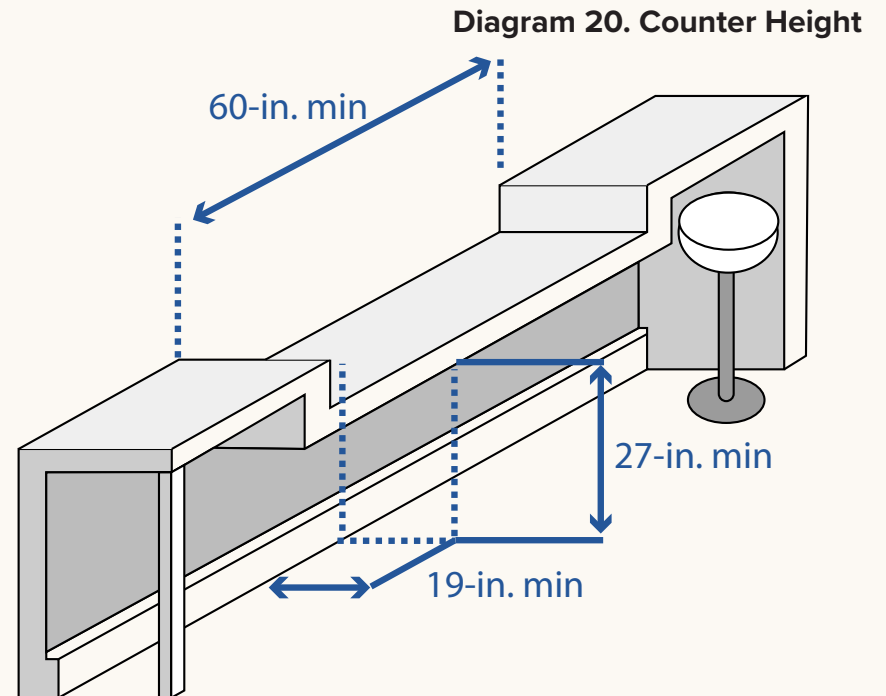
Dining Areas - Seating

Amenities within the dining area shall be accessible

Dining Surfaces Exceeding 34-inches in Height

- Where food or drink is served for consumption at a counter exceeding 34-inches in height, a minimum length of 60-inches must be accessible.
- Knee and Toe Clearances must also be applied.

[CBC 11B-226.3 Dining Surfaces Exceeding 34-inches in Height](#)



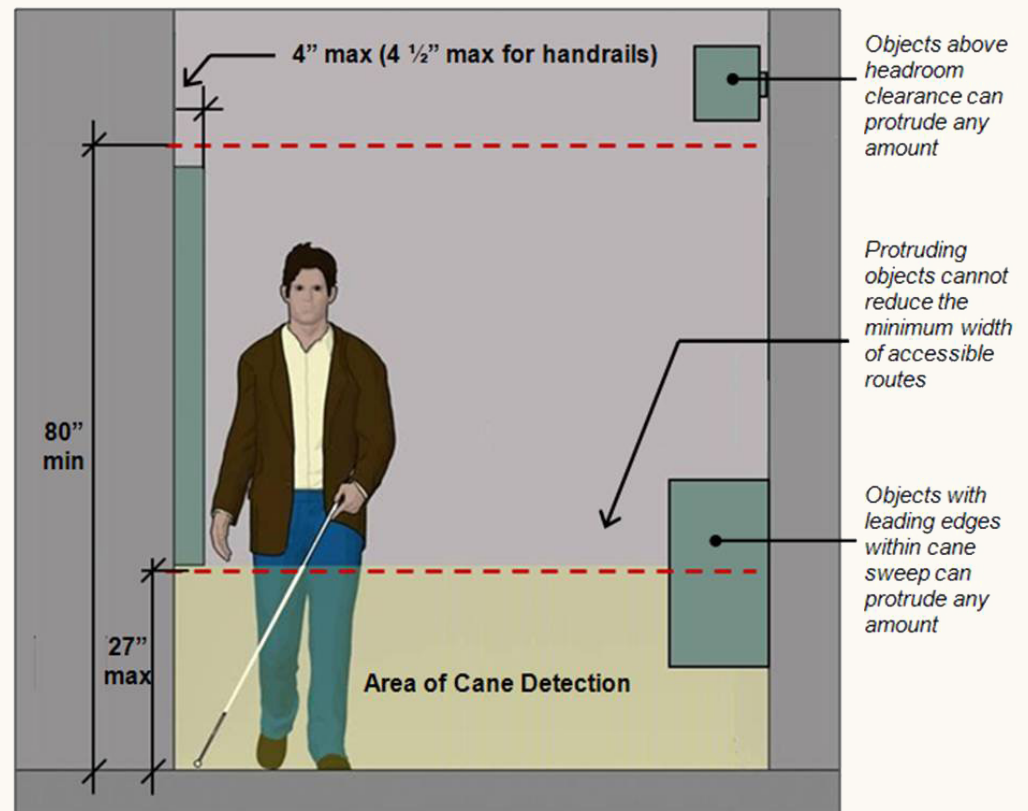
Dining Areas

Amenities within the dining area shall be accessible

Protruding Objects

- Objects mounted on walls, partitions, columns, and other elements along circulation paths can pose hazards unless their projection is limited. Those with leading edges that are within cane sweep (27-inches high maximum) or that provide minimum headroom clearance (80-inches minimum) do not pose hazards and can protrude any amount.
- Objects with leading edges more than 27-inches high and not more than 80-inches high above the finish floor or ground are permitted to protrude no more than 4-inches maximum horizontally into the circulation path.

Diagram 21. Protruding Objects





ADA REQUIREMENTS

Dining Areas

Amenities within the dining area shall be accessible

Access To Dining Amenities/Services

- Tableware, dishware, condiments, food, beverage shelves and dispensing devices shall be located within accessible reach ranges, including:
 - Where a forward reach is unobstructed, the high forward reach shall be 48-inches maximum and the low forward reach shall be 15-inches minimum above the finish floor/ground.
 - Where a high forward reach is over an obstruction, the clear floor space shall extend beneath the element for a distance of not less than the required reach depth over the obstruction.
 - The high forward reach shall be 48-inches maximum where the reach depth is 20-inches maximum.
 - Where the reach depth exceeds 20-inches, the high forward reach shall be 44-inches maximum and the reach depth shall be 25-inches maximum.

[CBC 11B-308.2 Forward Reach](#)



ADA REQUIREMENTS

Dining Areas

Amenities within the dining area shall be accessible

Access To Dining Amenities/Services - continued

- Where a clear floor/ground space allows a parallel approach to an element and the side reach is unobstructed, the high side reach shall be 48-inches maximum and the low side reach shall be 15-inches minimum above the finish floor/ground.

Exception: An obstruction shall be permitted between the clear floor/ground space and the element where the depth of the obstruction is 10-inches maximum.

- Where a clear floor/ground space allows a parallel approach to an element and the high side reach is over an obstruction, the height of the obstruction shall be 34-inches maximum and the depth of the obstruction shall be 24-inches maximum.
 - The high side reach shall be 48-inches maximum for a reach depth of 10-inches maximum.
 - Where the reach depth exceeds 10-inches, the high side reach shall be 46-inches maximum for a reach depth of 24-inches maximum.

[CBC 11B-308.3 Side Reach](#)



LA *al fresco*

APRIL 1, 2025 | VERSION 1.2